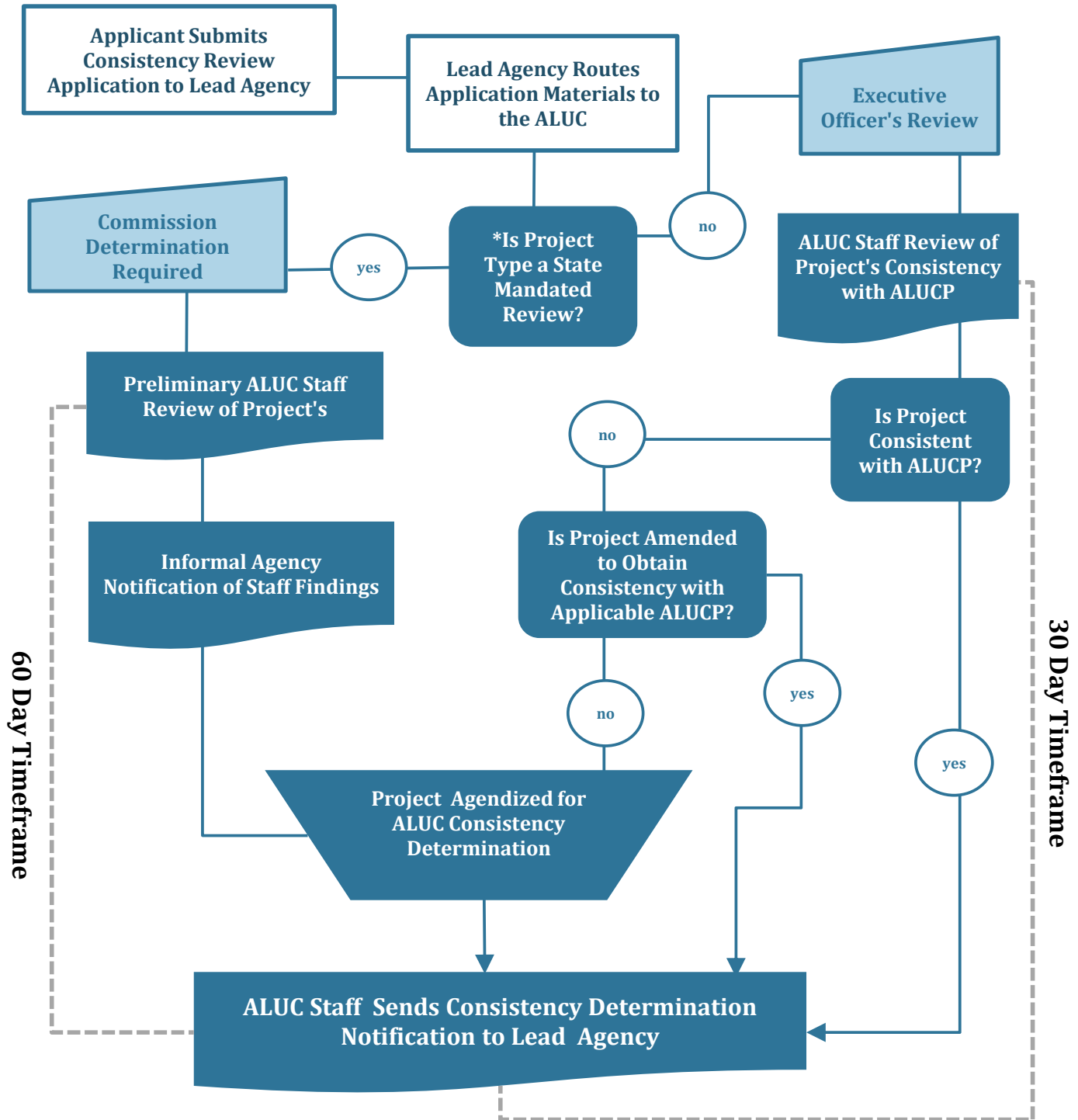


# AIRPORT LAND USE COMMISSION DEVELOPMENT REVIEW PROCESS



30 Day Timeframe

60 Day Timeframe

**\*Public Utilities Code Section 21676(b) mandates that the following types of actions be referred to the ALUC: general plans and amendments, specific plans and amendments, zoning ordinances, building regulations, airport master plans, airport or heliport expansion (if the facility requires a state permit), and new airport or heliport (if the facility requires a state permit). In addition, until such time the Commission finds that a local agency's general plan is consistent with the applicable ALUCP, the ALUC requires the local agency to refer all discretionary actions located within an Airport Influence Area or exceeding 100' in height for a Consistency Determination.**

*For detailed guidance, please refer to the applicable "Airport Land Use Compatibility Plan" and the "Project Review Guidelines for the Airport Land Use Commission" available at [www.sjcog.org](http://www.sjcog.org) or by calling the San Joaquin Council of Governments Regional Office at (209) 235-0600.*